

eny

Eny Lee Parker studio is located in Maspeth, Queens.
all ceramic pieces are handmade in the studio
wiring for lighting and upholstery are also done locally.
pieces can be customizable upon request for an additional fee.

leadtimes are 10-14 weeks *
studio hours | Monday - Friday, 11AM-6PM
studio visits available by appointment

commission inquiries email to eny@enyleeparker.com
all general inquiries to info@enyleeparker.com

please see our Terms & Conditions at
www.enyleeparker.com/terms-and-conditions



SOFT & SENSITIVE (*a love letter to me*)

Her most intimate concept to date, the show reflects on the past year, during which Parker navigated aloneness alongside the idea of becoming whole. Juxtaposing a sense of nostalgia with a focus on the future, the collection showcases pieces that are lighthearted and playful; shapes that Parker was obsessed with drawing as a kid – such as stars, butterflies, and hearts – are now translated into furniture and lighting as an adult.

The collection consists of Parker's celebrated rope column lights, which have been scaled back in order to more flexibly place in different spaces and can be purchased as a 3-piece, 2-piece, or a table piece with a light. Wooden stools have been hand carved with solid white oak, featuring upholstery pieced together using leftover leather hides from an accessory designer and legs that contain metallic glaze motifs. Other pieces include butterfly tables, star mirrors, and bullet hole heart vessels.



Butterfly Table

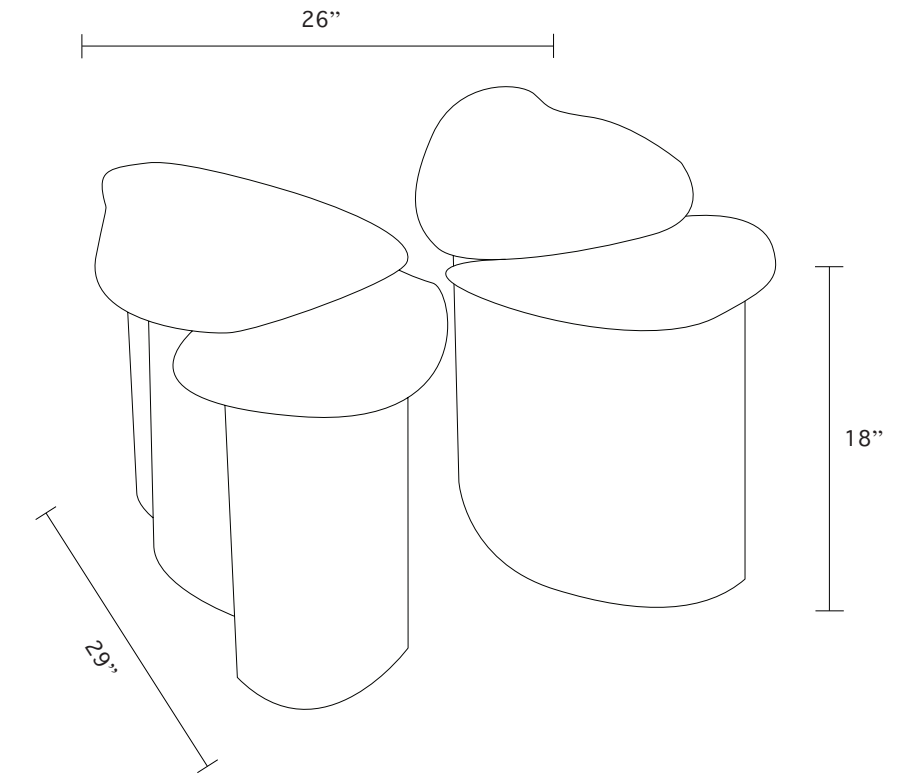
A SET \$6800

GLAZE OPTIONS

• metallic
• white

HEIGHT OPTIONS

- up to 24"
- standard height is 18"



MATERIALS

- ceramic base
- glazed finish

SIZE

depth: 28"-30"
length: 24"-26"
height: up to 24"

INFO

the butterfly table has been handbuilt in ceramic, making each piece unique. inconsistency in texture, shape, and color may occur due to its natural material and firing procedures.

AFTER CARE

for any dirt scruff in the ceramic body surface, a magic eraser will do the trick.



Snake Lamp

Down \$3000
Up \$3200

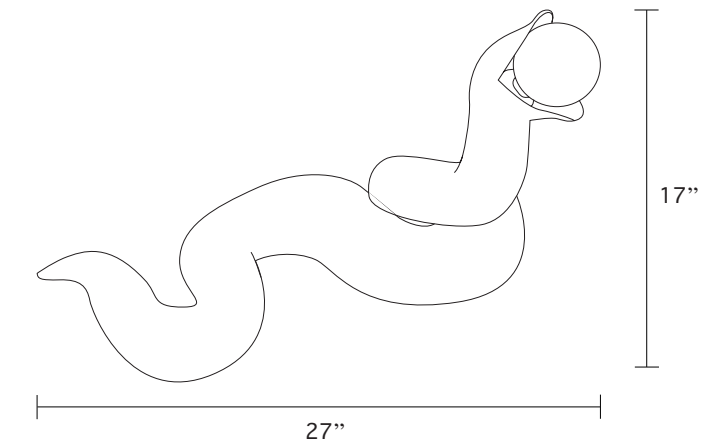
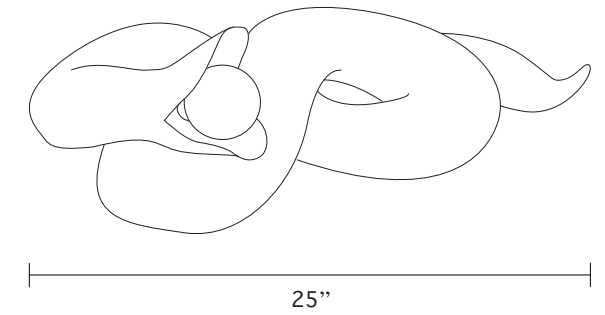
GLAZE OPTIONS



metallic
(moon stone)



white with glass



MATERIALS

-ceramic base (painted)
-brushed metal parts

SIZE

DOWN	UP
depth: 16"	depth: 11"
length: 25"	length: 27"
	height: 17"

INFO

the snake lamp has been handbuilt in ceramic, making each piece unique. inconsistency in texture, shape, and color may occur due to its natural material and firing procedures.

BULB SPECS, COLOR TEMPERATURE

Soft White LED, CRI 95
6w G25 Medium (E27) 250 Lumens
Dimmable (on cord)
Voltage: 120v-227v

*Porcelain Bulbs to be included upon request

CERTIFICATION

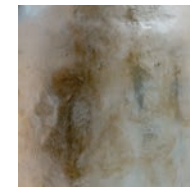




Peb Candle Holder

Small \$2200
Large \$3000

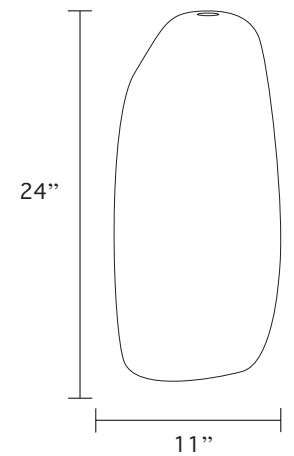
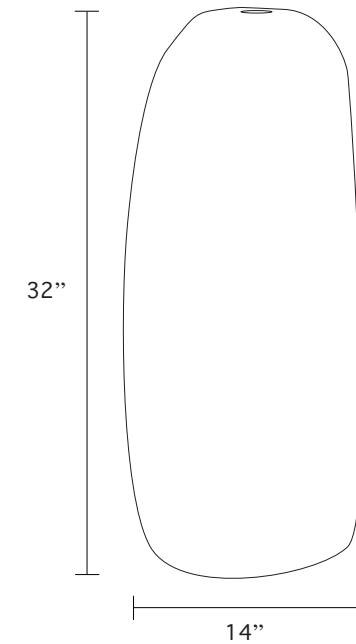
GLAZE OPTIONS



metallic
(moon stone)



white with glass



MATERIALS

-ceramic base

SIZE

SMALL	LARGE
length: 11"	length: 14"
height: 24"	height: 32"

INFO

the peb candle holder has been handbuilt in ceramic, making each piece unique. inconsistency in texture, shape, and color may occur due to its natural material and firing procedures.

AFTER CARE

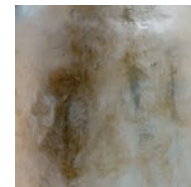
for any dirt scruff in the ceramic body surface, a magic eraser will do the trick.



Star Mirror

Small \$3000
Large \$5600

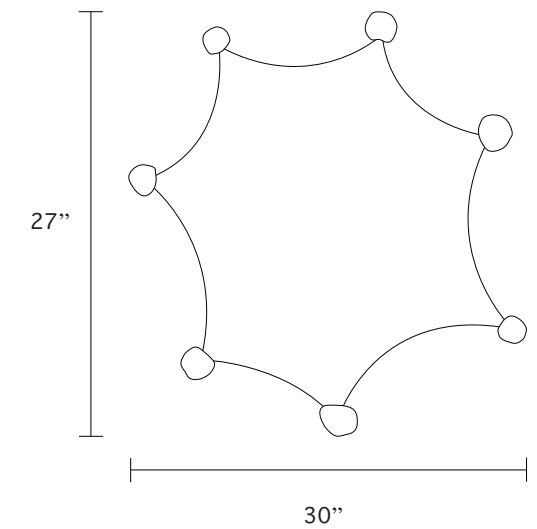
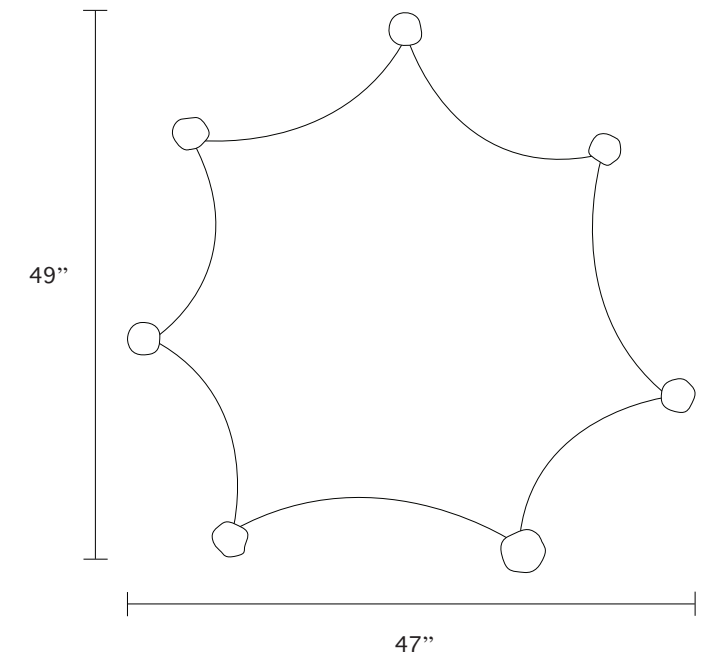
GLAZE OPTIONS



metallic
(moon stone)



white with glass



MATERIALS

-plywood backing
-ceramic pebbles

SIZE

SMALL	LARGE
length: 30"	length: 47"
height: 27"	height: 49"

INFO

the star mirror has been built and assembled in our studio. the pebbles are handbuilt in ceramic, making each piece unique. inconsistency in texture, shape, and color may occur due to its natural material and firing procedures.

AFTER CARE

for any dirt scruff in the ceramic body surface, a magic eraser will do the trick.



Puffy Star Sconce

Small \$1800
Large \$2800

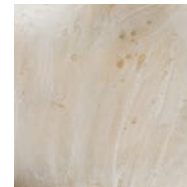
METAL FINISH OPTIONS

- brushed copper
- brushed brass

GLAZE OPTIONS



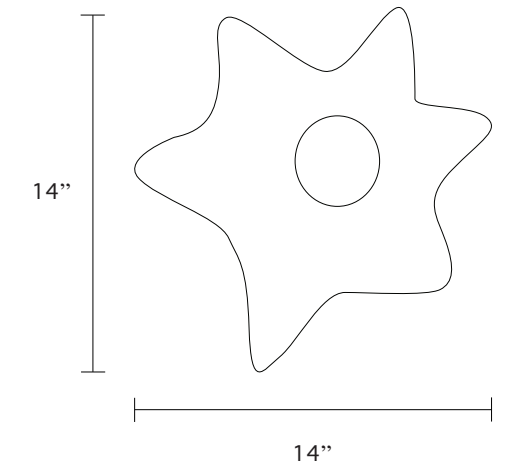
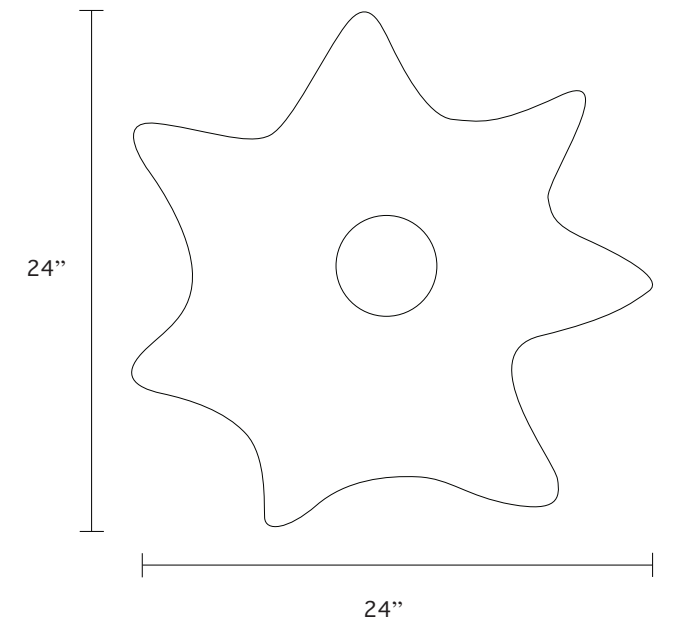
metallic
(moon stone)



white with glass

CLAY BODY PAINT OPTIONS

We use a fine art french paint called Fleur, see custom colors at:
www.fleurpaint.com/en/chalky-look/



MATERIALS

- ceramic
- metal parts

SIZE

SMALL	LARGE
diameter: 14"	diameter: 24"
height: 14"	height: 24"

CERTIFICATION



OTHER INFO

standard blackpate for sconces
(unless specified otherwise, fee applies)

BULB SPECS, COLOR TEMPERATURE

Soft White LED, CRI 95
6w G25 Medium (E27) 250 Lumens
Voltage: 120v - 277v
*Porcelain Bulbs to be included upon request

PULL SWITCH

choices of ceramic beads available
no pull switch also available



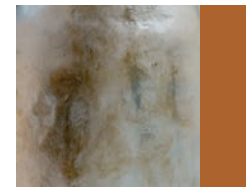
Heart Vessel

Small \$1200
 Medium \$2000
 Large \$3500

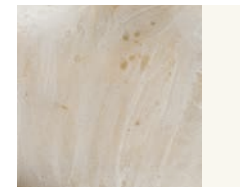
BULLET HOLE OPTIONS

- 1 hole
- 3-4 holes
- many holes

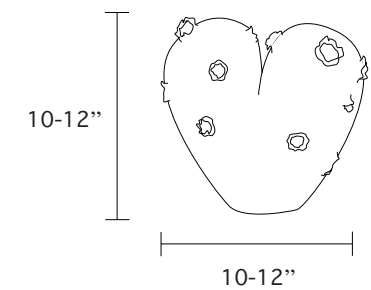
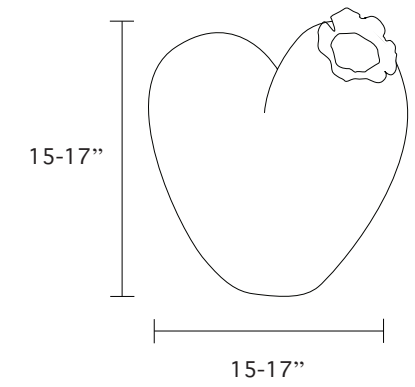
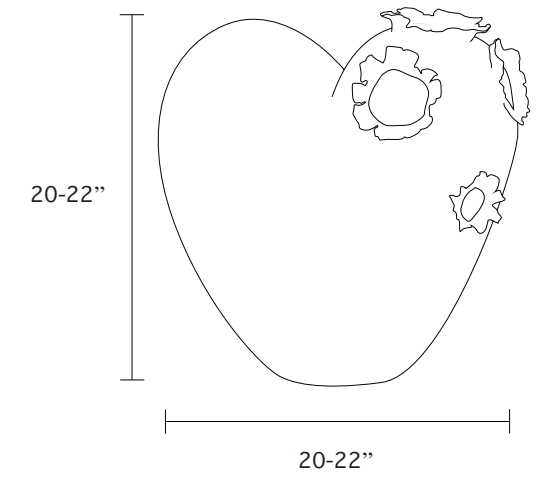
GLAZE OPTIONS



terra cotta body,
 with metallic (moon stone)



white sand clay body
 with white with glass



MATERIALS

-ceramic base

SIZE

SMALL MEDIUM
 height: 10-12" height: 15-17"

LARGE
 height: 20-22"

INFO

the heart vessel has been handbuilt in ceramic, making each piece unique.

inconsistency in texture, shape, and color may occur due to its natural material and firing procedures.

AFTER CARE

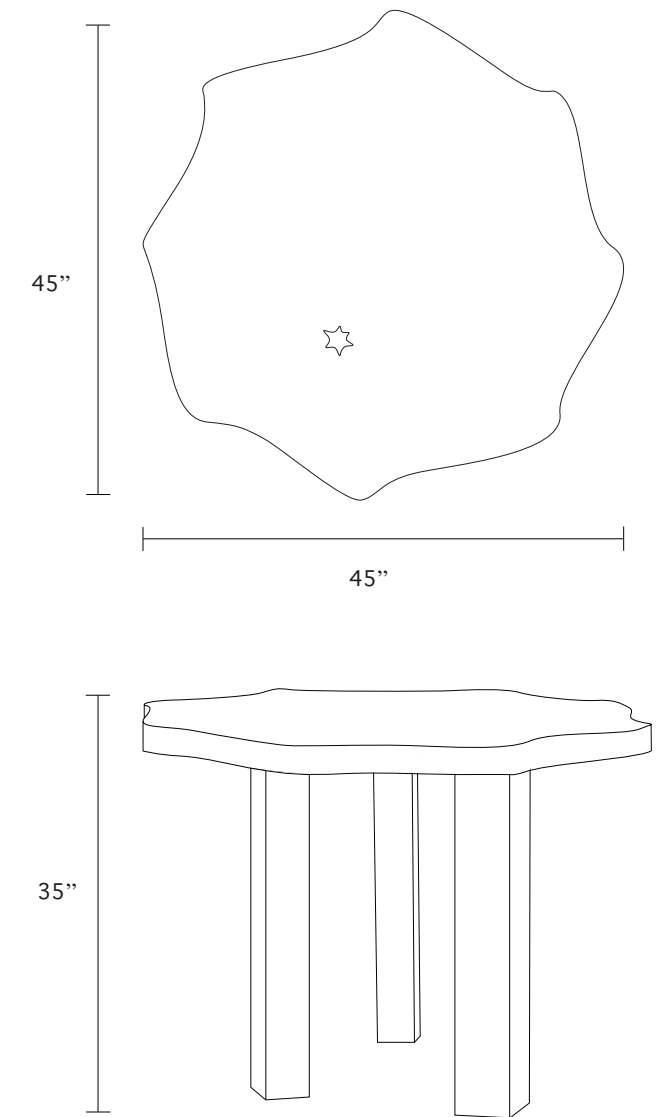
for any dirt scruff in the ceramic body surface, a magic eraser will do the trick.





Sun Breakfast Table

\$9,800



MATERIALS

-solid wood oak, satin osmo finish
-ceramic glazed motifs

SIZE

length: 45"
depth: 45"
height: 35"

sizes can be customizable, fees apply

INFO

the sun breakfast table has been handbuilt in wood and ceramic motifs, making each piece unique. inconsistency in texture, shape, and color may occur due to its natural material and firing procedures.

AFTER CARE

we recommend using coasters on the surface of the table and applying satin osmo finish every 6-8 months.

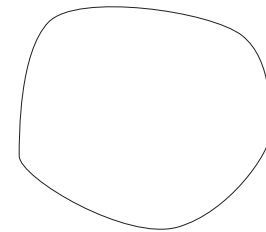


Peb Stool

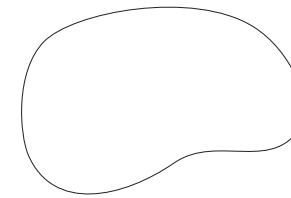
\$3500

UPHOLSTERY OPTIONS

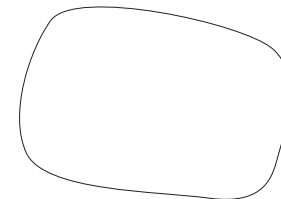
- mix of hides
- COM available upon approval (fabrics provided by client)



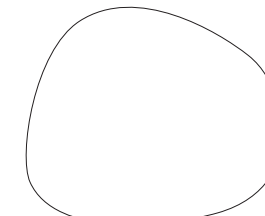
shape 1



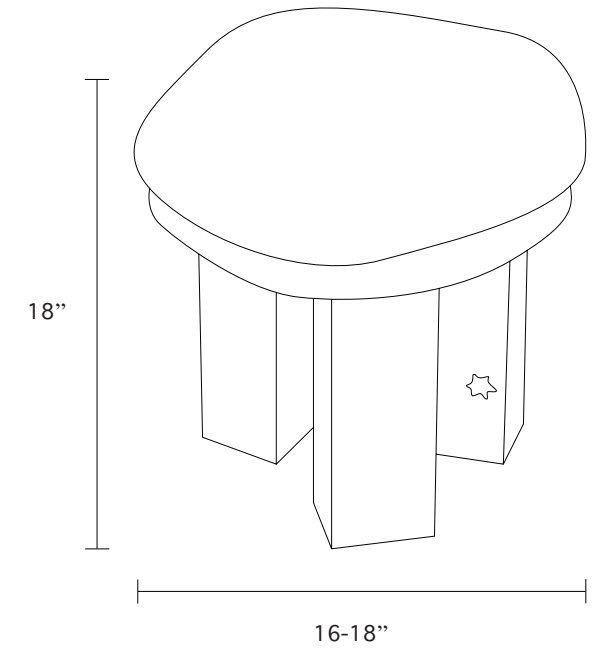
shape 2



shape 3



shape 4



MATERIALS

- solid wood oak, satin osmo finish
- ceramic glazed beads
- fur, leather, leather hide

custom only

INFO

the peb stool has been handbuilt in wood and ceramic motifs. for upholstery, pieces of hide have been patched up according to the shape of the stool, making each piece unique. inconsistency in texture, shape, and color may occur due to its natural material and firing procedures.

AFTER CARE

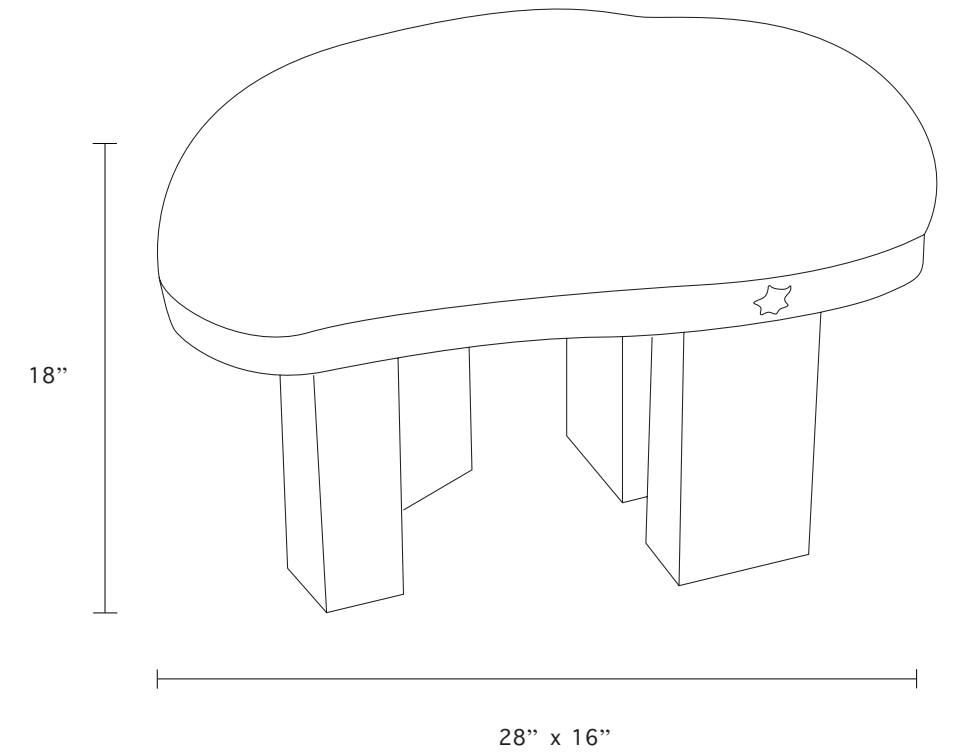
we recommend applying satin osmo finish every 6-8 months.





Peb Ottoman

\$4500



UPHOLSTERY OPTIONS

- mix of hides
- COM available upon approval (fabrics provided by client)

MATERIALS

- solid wood oak, satin osmo finish
- ceramic glazed beads
- fur, leather, leather hide

custom only

INFO

the peb ottoman has been handbuilt in wood and ceramic motifs. for upholstery, pieces of hide have been patched up according to the shape of the stool, making each piece unique. inconsistency in texture, shape, and color may occur due to its natural material and firing procedures.

AFTER CARE

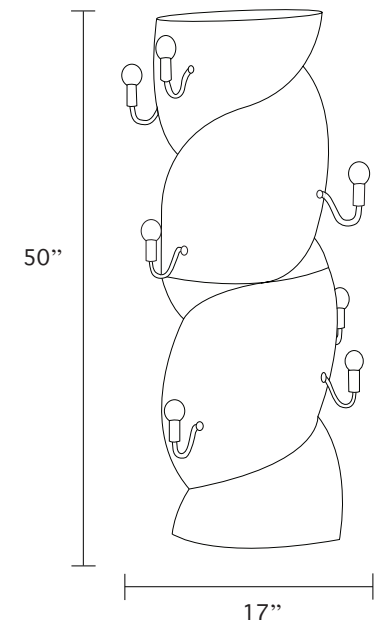
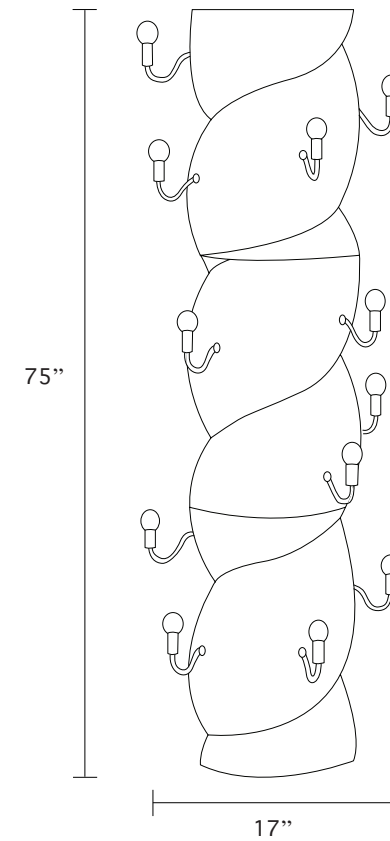
we recommend applying satin osmo finish every 6-8 months.



Rope Column Light

2 parts \$10000

3 parts \$14000



MATERIALS

-ceramic base
-polished nickle metal parts

also available in brass

SIZE

2 PARTS	3 PARTS
diameter: 17"	diameter: 17"
height: 50"	height: 75"

INFO

the rope column light has been handbuilt in ceramic, making each piece unique. inconsistency in texture, shape, and color may occur due to its natural material and firing procedureds.

BULB SPECS, COLOR TEMPERATURE

Soft White LED dimmable, 3000K
6w (E12) 250 Lumens

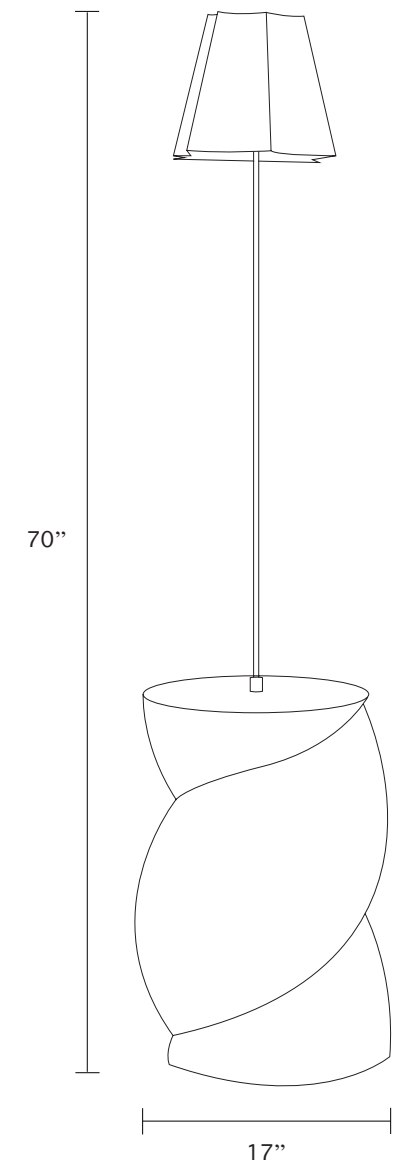
AFTER CARE

for any dirt scruff in the ceramic body surface, a magic eraser will do the trick.



Rope Table with Light

\$6800



MATERIALS

- ceramic base
- polished nickle metal parts
- *also available with brass
- linen custom shade

SIZE

diameter: 17"
height: 70"

INFO

the rope table with ight has been handbuilt in ceramic, making each piece unique. inconsistency in texture, shape, and color may occur due to its natural material and firing procededures.

BULB SPECS, COLOR TEMPERATURE

Soft White LED dimmable, 3000K
6w (E12) 250 Lumens

AFTER CARE

for any dirt scruff in the ceramic body surface, a magic eraser will do the trick.

eny

please see our Terms & Conditions at
www.enyleeparker.com/terms-and-conditions